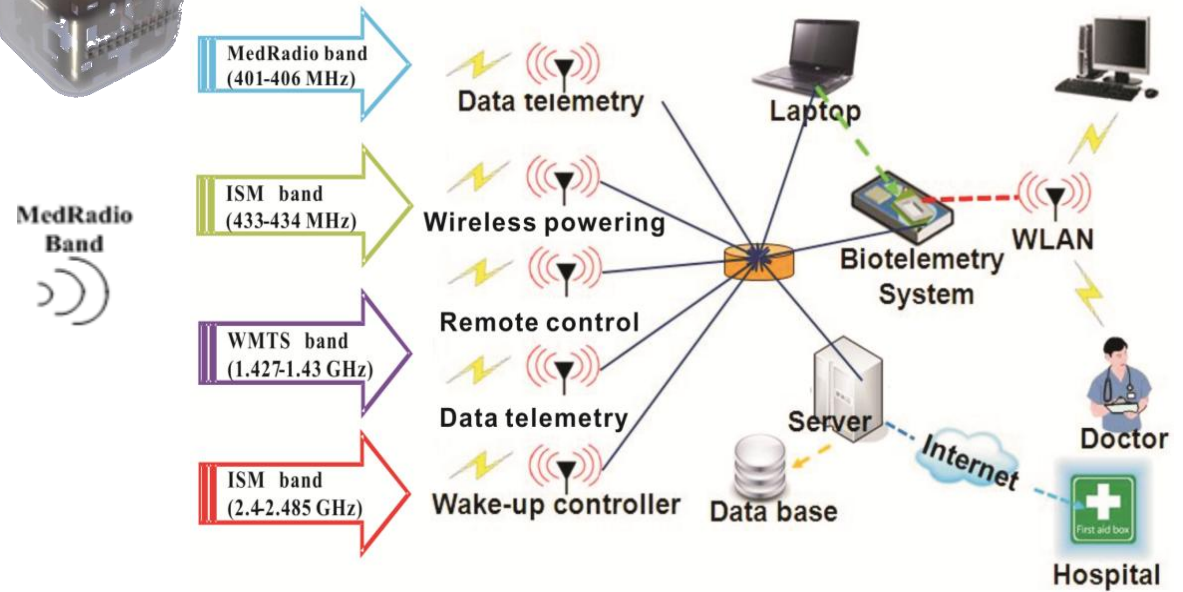
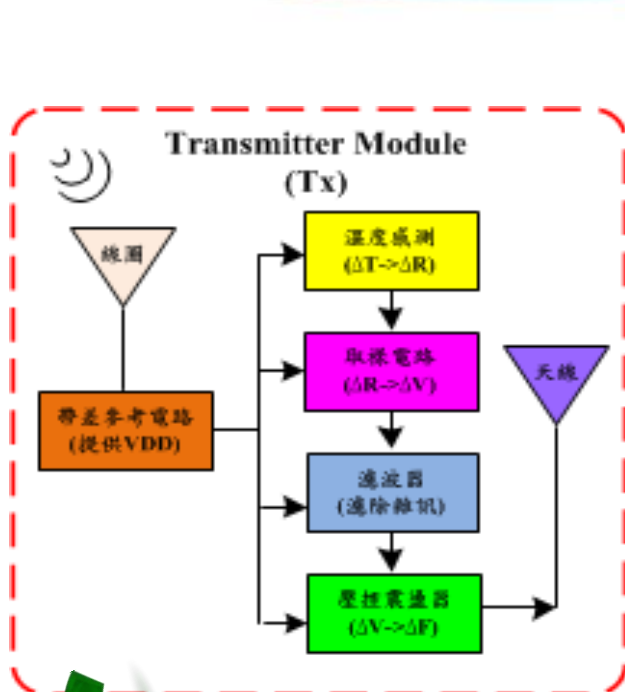
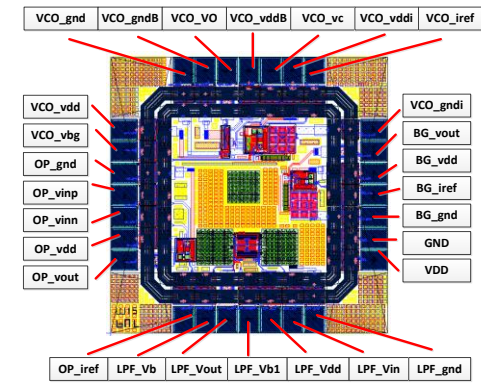
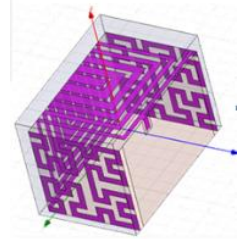


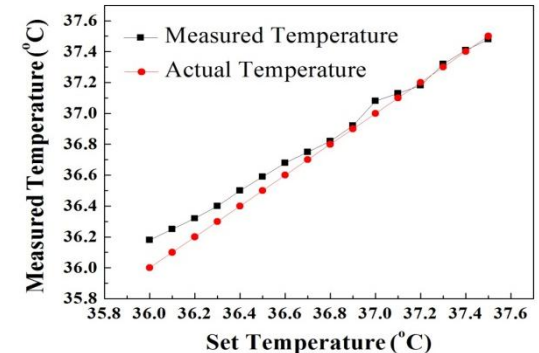
Wireless Low-invasive Implantable Systems for Basal Body Temperature Monitoring



假牙天線

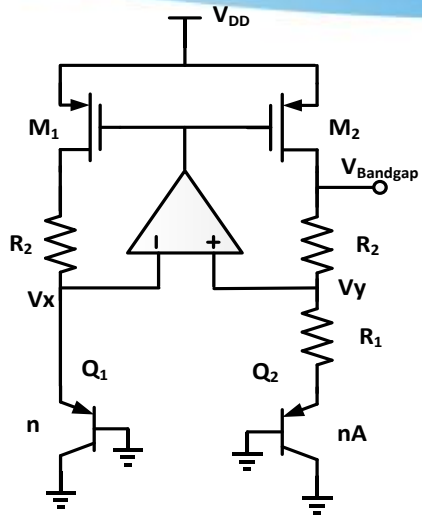


微型處理晶片

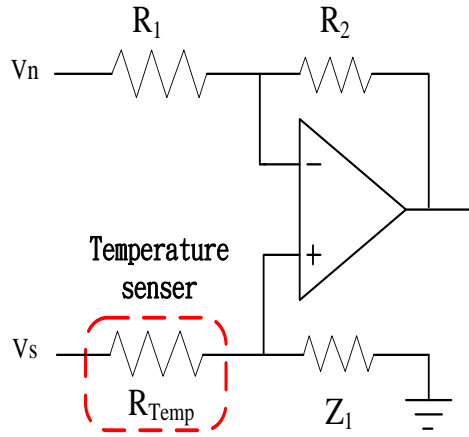


BBT量測
誤差0.0612 °C

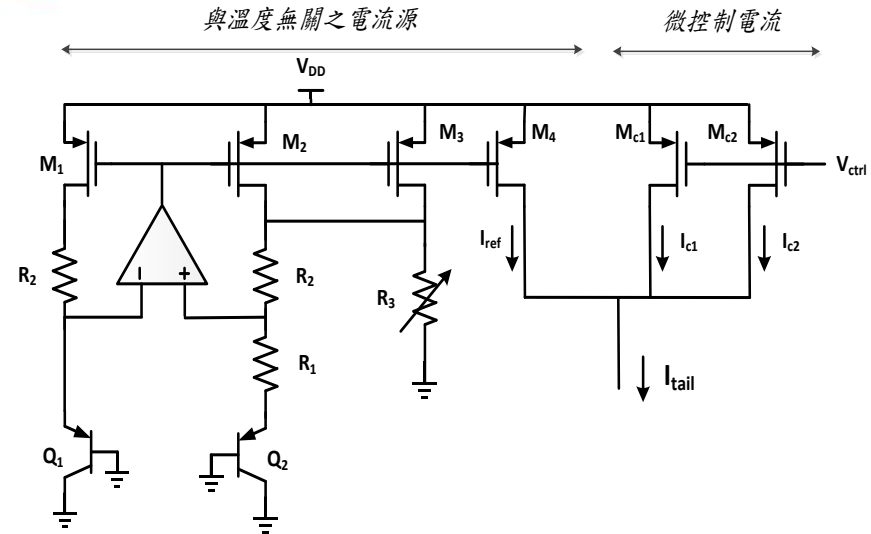
Wireless Low-invasive Implantable Systems for Basal Body Temperature Monitoring



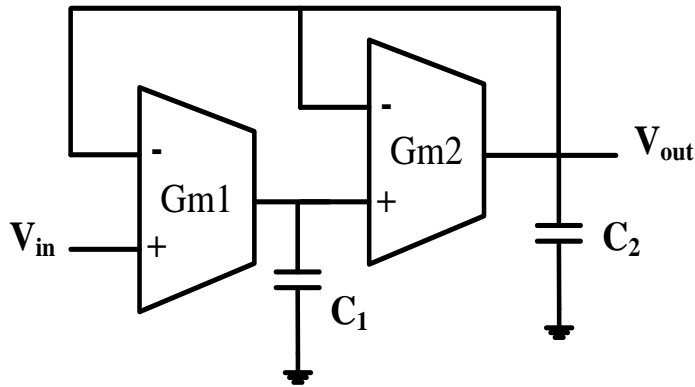
Bandgap Reference
Supply $V_{DD}=1.25V$



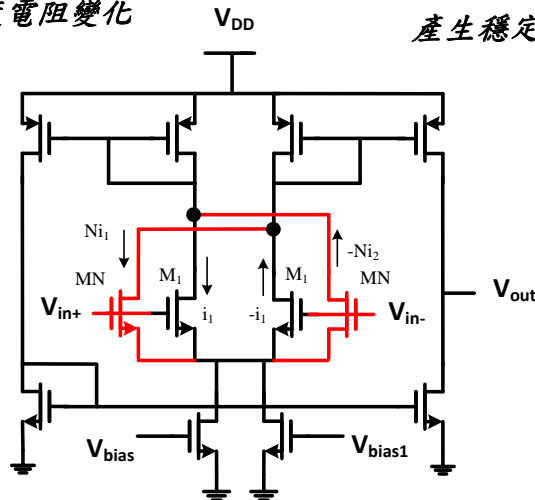
Amplifier Circuit
放大溫度電阻變化



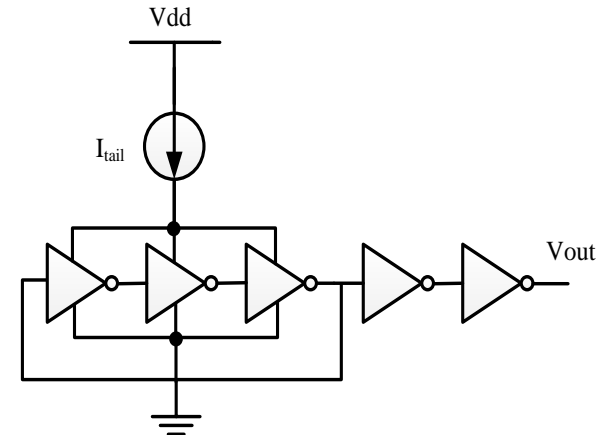
The Current Circuit with Temperature Compensation
產生穩定電流給予VCO使用, $T.C.=7ppm/^{\circ}C$



OTA-C LPF Circuit
濾除雜訊, 截止頻率點10Hz



OTA Circuit
使用電流抵銷法, 將低其gm值



Voltage Control Oscillator Circuit
環形振盪器, 振盪生醫頻帶401MHz~406MHz